



ISAF APPROVED SERIES PRODUCTION BOARD REGISTRATION - PART Ia

CONFIDENTIAL

This form shall be completed and returned to:
I.S.A.F. Secretariat: ISAF (UK) Ltd, Ariadne House, Town Quay, Southampton,
Hampshire, SO14 2AQ, United Kingdom Email: norbert@isaf.co.uk Fax: +44 23 80635789

Board Brand and Model **Model Year:**

Contact Person/Title:

Company:

Address:

Telephone Number: + **Fax Number:** + **Email:**

We hereby inform you of the start of a production run – not less than the number in brackets - of a (tick type of board):

Wave/Freestyle Board (50 per board in range) | |

Slalom/Speed Board (50 per board in range) | |

To to be distributed internationally, and that the board itself meets the requirements of the current International Funboard Class Rules (please tick as appropriate) The required quantities will be confirmed within three months by sending in Part II of this Registration, duly signed by the manufacturer. We accept that the ISAF or a representative of the ISAF may inspect the premises of production and we realise that non-compliance may result in the banning this board from all IFCA events and further action as decided by the ISAF.

HULL Construction: (may be referred to in case of a dispute)

*Deck skin material: *Underside skin material:

Core material: Internal structures:

*If fibre reinforced plastic skins give brief details of type and quality of all reinforcements and resin used. Please complete the attached sheet in respect of the board specifications. The specifications detailed on this sheet will be the registered specifications for the board unless you advise otherwise.

Volume (displacement in water):

Weight:
(Hull, including only mast-track, daggerboard case and skeg box)

Stiffness:
(Measured in accordance with ISAF recommended procedure)

No. of footstraps:

Skegbox system: Tuttle/Power/..... (other)

We agree to supply only boards built in accordance with the above specifications and that the final weight and stiffness values shall be within tolerances of 5% and 10% respectively of the values recorded above (the maximum weight and minimum stiffness limits shall apply only to boards in retail outlets, ie before being sailed). All boards produced will be supplied marked with the ISAF logo (minimum height 3cm) and the text "ISAF Approved Series Production Funboard" as supplied by ISAF. We accept the final authority of the ISAF on Measurement matters and accept the arbitration and decision of the ISAF in this respect.

Signature:

Name/Title:

Date:

ISAF APPROVED SERIES PRODUCTION BOARD REGISTRATION – PART Ib CONFIDENTIAL

This form shall be completed and returned to:

I.S.A.F. Secretariat: ISAF (UK) Ltd, Ariadne House, Town Quay, Southampton,
Hampshire, SO14 2AQ, United Kingdom –Email: norbert@isaf.co.uk Fax: +44 23 80635789

Board Brand.....

Wave/Freestyle Board (50 per board in range) | |

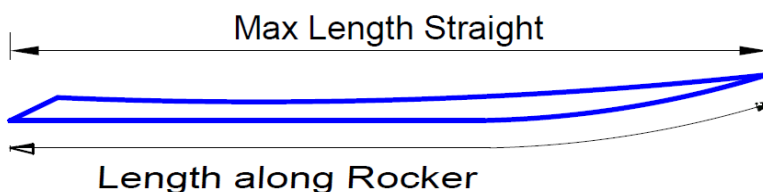
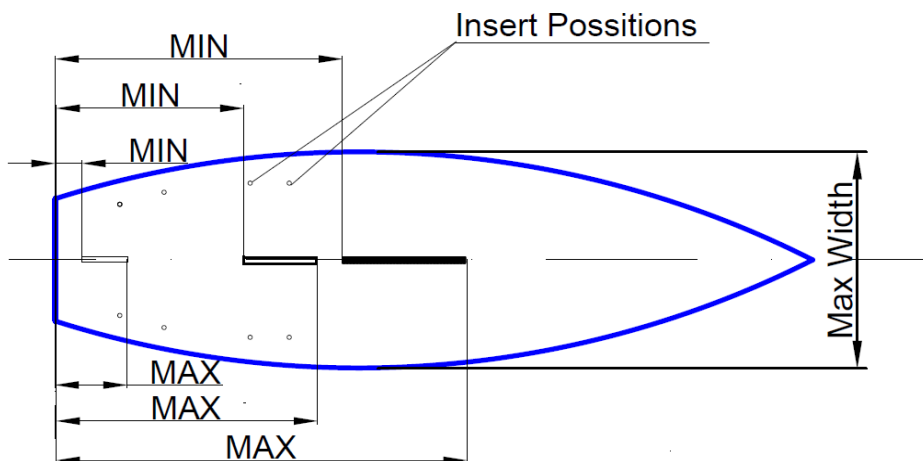
Slalom/Speed Board (50 per board in range)

Model.....

Year:

Measurements for the board should be taken as shown in the diagrams:

ITEM	MEASUREMENT in Millimetres
Length – straight	
Length - along rocker	
Width – maximum	
Skeg box slot – minimum	
Skeg box slot – maximum	
Centreboard slot - minimum	
Centreboard slot - maximum	
Mast step slot – minimum	
Mast step slot – maximum	



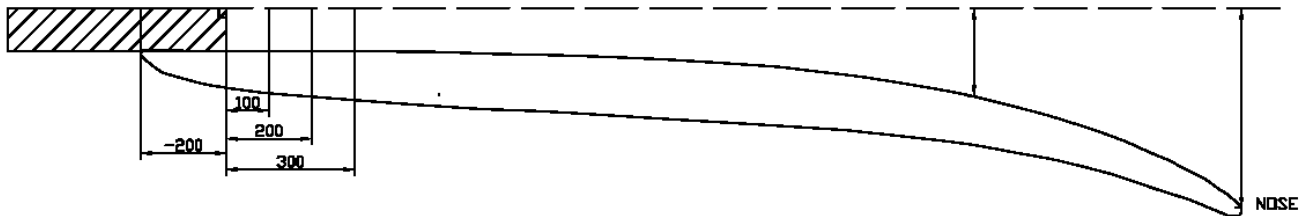
ISAF APPROVED SERIES PRODUCTION BOARD REGISTRATION - PART Ib continued CONFIDENTIAL

This form shall be completed and returned to:

I.S.A.F. Secretariat: ISAF (UK) Ltd, Ariadne House, Town Quay, Southampton,
Hampshire, SO14 2AQ, United Kingdom -Email: norbert@isaf.co.uk Fax: +44 23 80635789

BOARD DECLARATION - Builders are to submit detailed dimensions of their board on the **Hull Check Sheet** as follows:

With the board upside down mark off the hull at 100mm intervals, starting 200mm from the tail/ transom as shown in the figure below. Then, set up a spirit level laser pointing down the length of the board, with the beam starting at the 0 station, 200mm from the tail. Then measure at each station vertically to find the rocker measurements. . Correct the dimension to allow for the height of your reference beam above the hull at station 0.



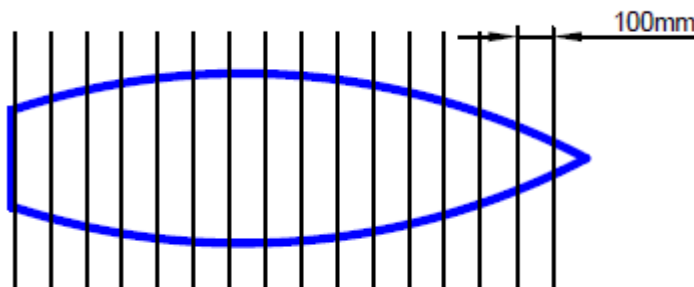
Vee and Concave

The vee and concave measurements are taken using a straight edge laid across the hull.



Width Measurements

The maximum width is taken at the start. Take the width measurements at 100 mm intervals along the whole board length as shown below. Take the 200, 800, 1100 station widths as a final check.



ISAF APPROVED SERIES PRODUCTION BOARD REGISTRATION - PART II Request for Inspection

CONFIDENTIAL - TO BE COMPLETED BY THE FUNBOARD MANUFACTURER

This form shall be completed and returned to:

I.S.A.F. Secretariat: ISAF (UK) Ltd, Ariadne House, Town Quay, Southampton,
Hampshire, SO 14 2AQ, United Kingdom- Email: norbert@isaf.co.uk Fax: +44 23 80635789

MANUFACTURER'S DECLARATION

Board/Brand Name:

I confirm that all the specifications (length, width, volume, weight, stiffness) of the board named above **are as specified in the Part I a and b form, except as detailed below:**

Amendments to specifications in **Part I:**

.....

I declare that I have produced at least 10 boards of the above named model.

The boards can be inspected at the following factory:

Company:

Address:

Country:

Name of contact at factory:

Tel:

E.mail:

A copy of the company promotional brochure which includes full details of the board described in Part I, together with clear visual representation of these may be enclosed herewith.

Signature: **Title:** **Date:**/200